

1413 Fulton Street

Bedford Stuyvesant

Join Blink Fitness - 5,000sf of Retail Space Available for Lease
 Located Between Tompkins & Marcy Avenues



SIZE

Up to 1,200sf – 5,000sf – Ground Floor
 7,500sf – Second Floor (Blink Fitness LEASED)
 7,500sf – Third Floor (Blink Fitness LEASED)

POSSESSION July 2016

CURRENTLY New Development

COMMENTS

- Join Blink Fitness on Fulton Street.
- Beautiful new retail development on Fulton street in the heart of Bed-Stuy.
- In close proximity to public transportation.
- 5,000sf remaining on the Ground Floor.

NEIGHBORS Citibank, TD Bank, Metro PCS, McDonalds, Subway, Checkers, Dunkin' Donuts, Foodtown, Applebee's, US Post Office, Chase Bank, and many more.

DEMOGRAPHICS

	1 Mile	3 Miles
Population	180,121	1,349,246
Households	71,452	508,790
Average Age	35.80	35.40
Median HH Income	\$44,231	\$49,632
Daytime Employees	36,273	353,659

FOR MORE INFORMATION, PLEASE CONTACT

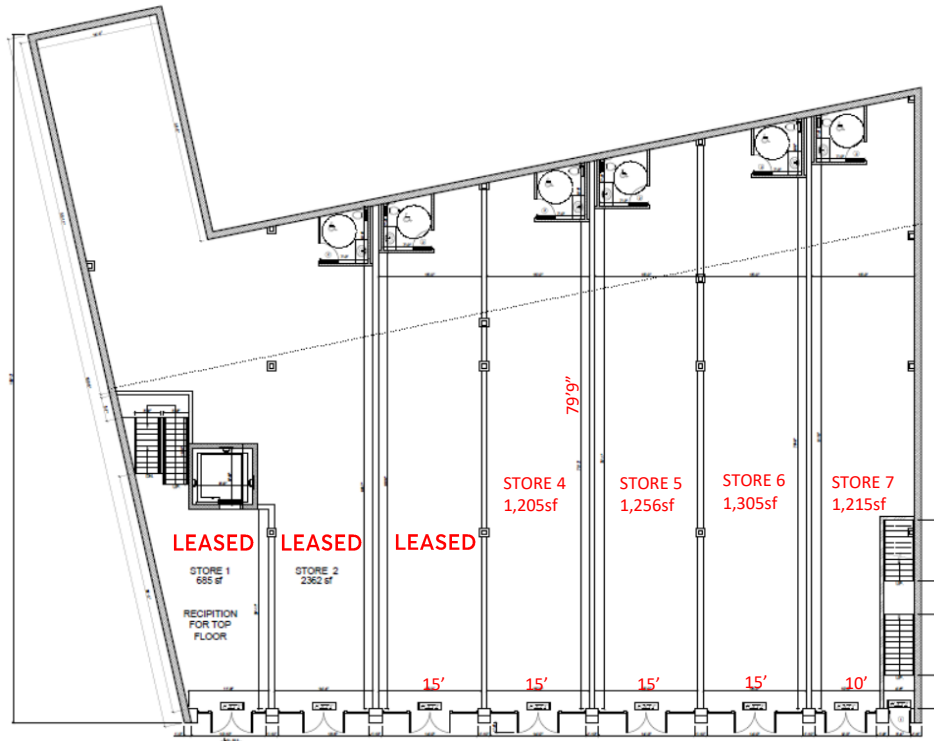
Yitzi Chopp

Director of Acquisitions & Leasing
 914.517.2621
 ychopp@rwrealestategroup.com



RW REAL ESTATE GROUP, LLC
 95-25 Queens Boulevard, 10th Floor
 Rego Park, New York 11374
 Tel 914 921 8240
 Fax 646 205 9250
 www.rwrealestategroup.com

FLOOR PLANS



AERIAL

